

Z.P.H.G.A.

NEWSLETTER

AUGUST 2020 ISSUE

INSIDE THIS ISSUE

PG. 1

Now's the time to put your money where your card is. Discounted Rates with your Z.P.H.G.A. Membership Card

PG. 3

Danger on our National Roads

PG. 5

Citizen Science, a very important component of our "Give back" program



AUGUST 2020

OUR YEAR IN PERSPECTIVE

Despite the lockdowns and issues COVID-19 has thrown our way the Safari Industry has not sat still. In fact all you have to do to prove my point is talk to any of our Z.P.H.G.A. members and they will tell you just how busy they have been, possibly busier than in any "normal" year.

There has been more educational courses run in 2020 than possibly ever in the history of the Z.P.H.G.A. Our members have done more anti-poaching work across the country than ever before and the results have been astonishing. New Camps have been built, others refurbished and so the list goes on. Here are some of the exciting things that have been happening through out the Z.P.H.G.A. Community

NEWSLETTER ISSUES: 1st February; 1st March; 1st August; 1st November yearly



THE @RANGE ELEPHANT
GIFTS, CRAFTS, ART AND BOOKS

Provide a valid Z.P.H.G.A. membership card and get
10% Discount
 on almost all products in store.

COMMISSION AVAILABLE TO THOSE WHO BRING GUESTS TO SHOP WITH US.

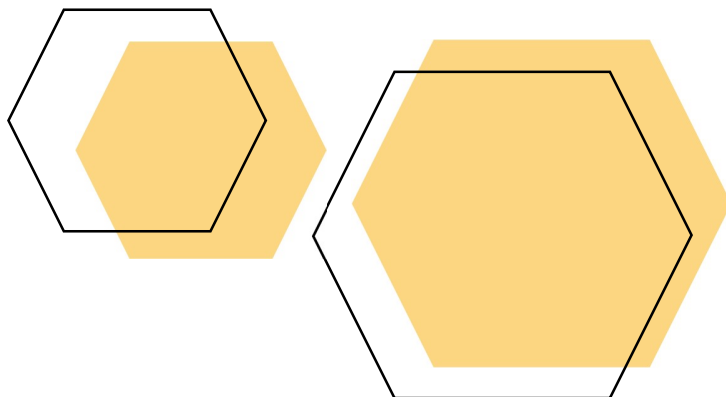
Z.P.H.G.A.

DISCOUNTS

MEMBERSHIP DISCOUNTED RATES

The Z.P.H.G.A. amongst its initiatives has been working on an “enhanced benefits programs”, this is where the Z.P.H.G.A. members are granted access to special rates on products and services, saving members money on industry specific goods and services which include motor spares, security, medical rescue, training courses, group injury/loss of income insurance, accommodation and many others as negotiated by the Z.P.H.G.A. from time to time and when a specific need is identified by fellow members.

To benefit from this program and the suppliers from across Zimbabwe that have agreed to discounted rates members will have to produce a Valid Membership Card.



MEMBERSHIP CARDS

DON'T LOOSE OUT

So firstly you need a Membership Card to participate in this initiative, the process is simple and what's great is that your first card is free of charge. If you lose your card then you will have to pay for your second and subsequent cards.

It is unfortunately true that we have had issues with Membership Cards taking several months to be delivered to us, this is because there needs to be 20 applications before the printers will undertake the printing for us. Plans are afoot for us as an Association to be able to produce our own cards without the need to go through S.O.A.Z. which should streamline this process, with the possibility of providing “yearly membership” cards to all that are current paid up members, yet another step to us becoming more of a professional organization.



MASTERS
Paint & Hardware

Provide A Valid Z.P.H.G.A Membership Card & Get
5% OFF!
 On Hardware & Services
 (Hardware Related)

Z.P.H.G.A.

Masters Supporting Zimbabwe Conversation



Z.P.H.G.A. BRAND

SUBTITLE GOES HERE

It is not compulsory as a Professional Guide or Professional Hunter to be a member of the Z.P.H.G.A. and in fact it is restricted to individuals who comply with our strict criteria for consideration before membership is granted.

Our Guiding Code of Conduct recently introduced in 2020 further cements our commitment to long term and sustainable conservation by our Members. But aligning oneself, if one qualifies, with an organisation like the Z.P.H.G.A., with a strong legacy of maintaining industry integrity and standards provides Agents with a standard to sell and Guests a superior quality product to buy into.

Simply put, individuals with an affiliation to the Z.P.H.G.A. are automatically synonymous with the toughest Guiding standards and - more importantly - principles, in Africa.

Over the next few months our logo and brand will be more evident on web pages and supporters of our Association.

BRANDING

UPDATING THE Z.P.H.G.A. SOCIAL PAGES

To showcase our commitment to our members we are excited to inform you all about our web site revitalization project that is being done through Katie NICOLLE.

We aim to have our new image page launched by October of this year.

Katie Nicolle Consultancy With over 10 years experiences as a freelance marketing consultant, Katie specialises in WordPress Website design and all forms of digital online marketing. Raised in Zimbabwe and the daughter of one of our members, Katie has strong ties to Zimbabwe and certainly has a passion for the natural world and its wildlife.

Katie has worked with a variety of organisations offering a wide range of services from web design and social media management to search engine optimisation and digital marketing campaigns.

It is for these reasons that Katie Nicolle Consultancy will be assisting Z.P.H.G.A. with a complete rebuild of our website and overall digital presence. For more visit her website - www.katienicolleconsultancy.com



ROAD CARNAGE

DO YOUR PART

Our National Roads are most certainly a death trap for all types of domestic as well as wild animals.

Once we had fences, now they no longer exist.

A very good illustration of the problem at hand came from Wayne VAN DEN BERGH whom recently posted a series of pictures and a short video of a dead cow on the road that had many White Backed Vultures feeding on the carcass.

The problem with this was that the carcass proximity to the road combined with the “could not careless” motorists resulted in several vultures being killed by passing traffic.

CAUTION

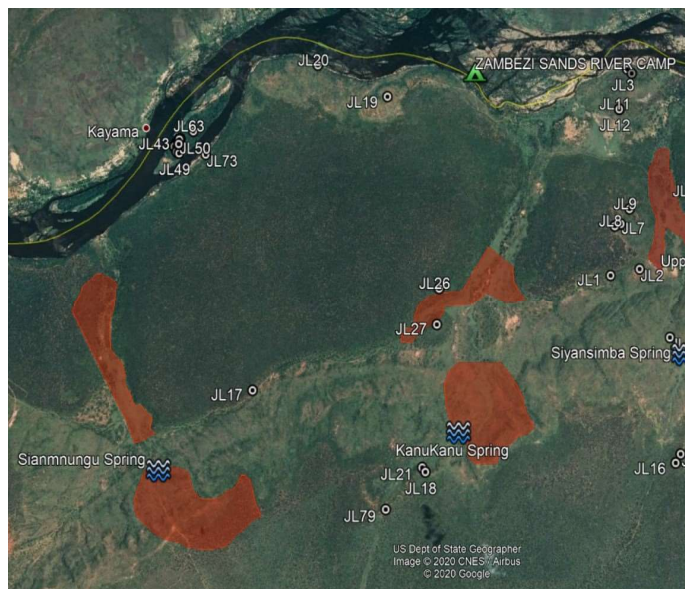
ALWAYS PLAY IT SAFE

If at all possible we urge all our members to pull carcasses off the road so as to better protect the scavengers, this not only will protect the Vultures but the carnivores such as Hyaena, Civets, Genets amongst others.

HOWEVER - We would also like to advise our Membership when performing acts of “kindness” you could implicate yourself in issues that were nothing to do with you for example by removing a carcasses, the owner of the cow may just pitch up at the wrong moment and suggest you killed his beast. So remove or move dead livestock with caution as we do not want you to be blamed for the initial road kill.

Take pictures or better still a video of what has happened that may just prove your case at a later date.

ABOVE ALL BE SAFE please do not get hit by a passing vehicle!!



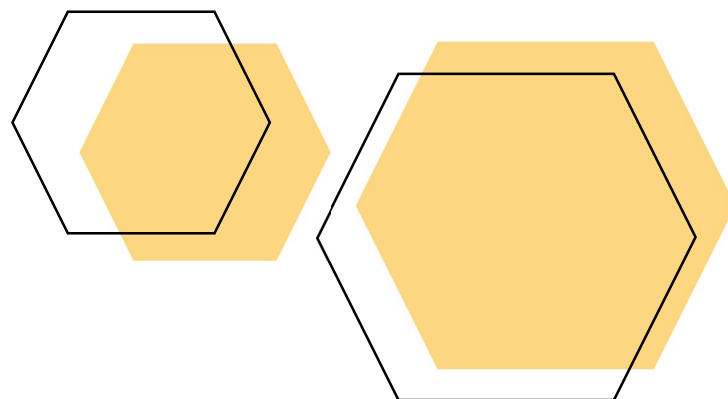
CITIZEN SCIENCE

DATA COLLECTION

The Z.P.H.G.A. is currently supporting several data collection or citizen science initiatives currently been run within Zimbabwe. It would be amazing if all our members could get involved in these projects and add to the data value being collected.

Current projects include:

- Ground Hornbill Sightings
- Vulture Nest survey
- Big-Cat sightings
- Baobab Tagging





GET INVOLVED

DON'T LOOSE OUT

Forms were recently set to our WhatsApp membership group but if you need an emailed copy please do get in touch with jenny VAN DEN BERGH on zpgha1@gmail.com

Print off a couple pages for each and keep them in your vehicle (in your "Study Packs" or "Law Packs" is a great place to keep them safe) and when you are out in the bush please complete them with fellow guides, your family and friends and with a bit of luck your guests. The important thing is that they need to be filled out and the data sent onto the researchers.

Let's all see if we can do our bit and add to the valuable research being done around our incredible country!!

 Southern Ground-Hornbill Info Capture Sheet 	
Email complete sheets to: Merlyn Nomusa merlynomsa@gmail.com	
Date Recorded	
Group Size (#)	
Group Composition (Male)	
Group Composition (Female)	
Group Composition (Juvenile)	
GPS (Northings – UTM 8 digits)	_____S
GPS (Eastings – UTM 8 digits)	0 _____E
Nest Active (Please tick)	YES <input type="checkbox"/> NO <input type="checkbox"/>
Tree Species	
Tree Hight	
Nest Hight	
Nest Orientation N; S; E; W	
Habitat information for area surrounding nest site	Openness (1 Open – 5 Dense)
	Tree Layer (1 – 3)
	Shrub Layer (1 – 3)
	Grass Layer (1 – 3)
Observers Name	
Observers Profession	
Observers Phone Number	
Observers Email	
Knowledge is key	

Useful Notes:

- 1) Group size (number of individuals) Be patient and make sure you have seen the entire group, some may be hidden close by foraging.
- 2) GPS coordinates are important to capture, if you do not have a GPS or smart phone with a GPS app, record the closest landmark and its distance and direction to the point. Alternatively, download [Google](#) and record your sightings there to get GPS points automatically.
- 3) Take photographs! Of the birds, the environment and nest surroundings without disturbing the group.

Observer Notes:



ZAMBEZI SHOOTING CLUB

VICTORIA FALLS

Long has there been a need for a shooting range in the Victoria Falls. The lack of such a facility has affected our members in two ways, firstly Members have had to travel to Harare to sit their Shooting Proficiency tests and secondly our members have had no place to go and hone their skills so as to keep current.

All this has now changes thanks to the Z.P.H.G.A. Committee members in the Victoria Falls area. The Zambezi National Park Area Manager, Mr. Daniel SITHOLE and our own Mr. John LAING have constructed a shooting range north of the Kazungula Road airstrip. The range is 100m long by 25m wide, the measurements conform to the Rifle Association of Zimbabwe standards.

Whilst the Range is on National Parks estate it will be run as a Club and as such will have it's own Constitutional documents and paying members, much the same as the Cleveland Shooting Club in Harare run by Mr. Chris PACKENHAM.

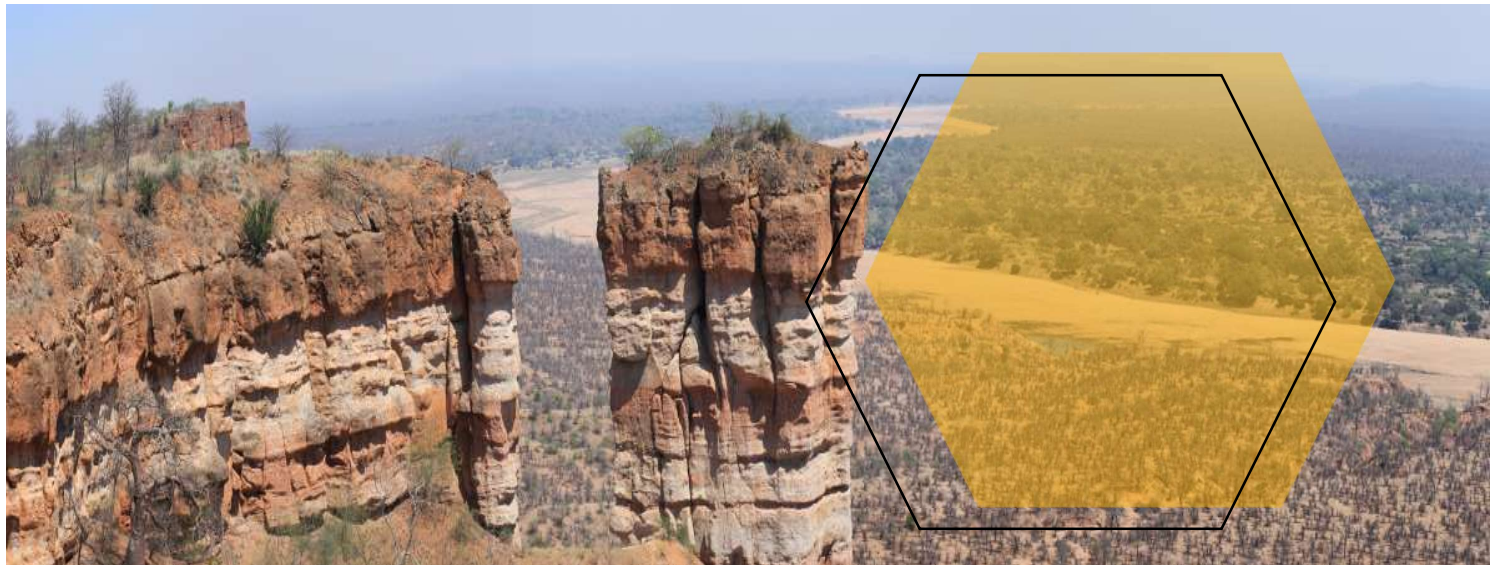
It is hoped that by the end of August the inaugural Committee will have been selected, and once in place there are plans for roofed shooting point and a small club house has been proposed.

The pass rate of our L.P.H. recently at the Harare shooting tests has worryingly not been of a suitable standard and so it is hoped that the introduction of the Zambezi Shooting Club will go a long way to ensuring good quality training and mentorship that will result in better test results.

Talk is already underway as to the feasibility of hosting an annual Shooting Proficiency test at the Zambezi Shooting Club, it has not been confirmed or finalized so all we can say is WATCH THIS SPACE!!

For our Member Pros, this is a welcome venue to keep current wit you shooting abilities and to ensure your weapons are in good working order. Many years rattling in a bag or gun rack may have them shooting off at a slight tangent which is possibly the not the best defense with a charging animal in your sights.

Whatever your needs are we are thrilled to have been part of setting up this incredible facility. .



MEMBERSHIP STATUS

IT'S A COLLABORATIVE EFFORT

It is true to say that any association is only as good as its Membership. Recently there has been a huge drive and push to onboarding new members. Our membership currently stands at 252 fully paid up members. The August 2020 figures are very encouraging as the May 2020 report showed our membership figures to be 219.

Unfortunately we lost 30 members this year due to non-payment of subs sighting COVID as the common excuse, however subs were due by 1st October 2019 and COVID only hit us on the 31st March 2020, meaning all Members should have been fully paid up before then and there for COVID is a poor excuse.

Z.P.H.G.A. GROUP	Z.P.H.G.A. MEMBERSHIP #
Associate Members	27
Cub Members	2
Full PG	37
Full PH & Restrictions	131
Learner Professional Hunters	55
Total PG, PH & LPH	252

Z.P.H.G.A. GROUP Z.P.H.G.A. MEMBERSHIP # Associate Members 27 Cub Members 2 Full PG 37 Full PH & Restrictions 131 Learner Professional Hunters 55 Total PG, PH & LPH 252

There is still a long way to go in terms of membership and we would like to encourage every member to step up in this regard. We ask that ALL of you sign up at least one new member for 2021, remembering the Z.P.H.G.A. year runs from 1st October through to the 30th September, meaning you have a little over six weeks to convince a friend of the benefits of joining up!

"CAN YOU REALLY AFFORD NOT TO BE A MEMBER?"

"As an existing fully paid up 2020 Z.P.H.G.A. Member, if you sign up a new Member between now and the 1st October 2020 we will offer you a 25% off your 2021 Membership renewal". Terms and conditions will apply, for further details and the Membership forms please contact John LAING on WhatsApp: +263 7126 133 99 or john@imvelosafarilodges.com



CONTACT US:

SHOULD YOU REQUIRE ANY INFORMATION OR ASSISTANCE

As the Z.P.H.G.A. your Committee are here to assist you, to enable us to answer your questions in a more timely manner please would you in the first instance contact Jenny VAN DEN BERGH on zphga1@gmail.com and request to be put in touch with one of the following Committees whom will gladly assist you.

- Z.P.H.G.A. – Chairman
 - Lance NESBITT
- Z.P.H.G.A. – Vice Chairman
 - Rob LURIE
- ZPHGA – Ethics
 - Guiding Code of Conduct
- Z.P.H.G.A. – Finance
 - All payment issues
- Z.P.H.G.A. – Advertising & Marketing
 - All branding
 - Membership Cards
 - Membership Discounted Rates Initiative
 - Fundraising
- Z.P.H.G.A. – Next Generation
 - Study & Law Packs
- Z.P.H.G.A. – Training
 - RIFA & SAVE Valley conservancy initiatives
 - Devils Gorge Conservancy training program
- Z.P.H.G.A. – AGM & Dinner

We would also like to advise our Members that from time to time we understand mistakes do happen.

If you find yourself in an impossible situation please do call your Committee and ask for advice. There have been several recent stories emerge and regarding members that “had they raised the issue” a completely different result may have been the order of the day.

“We are here to assist you where-ever possible”

PHOTOGALLERY

ALL ABOUT PICTURES



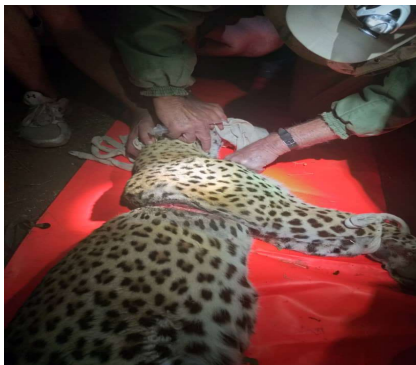
Harris at a Falconry talk by Reg QUERL



Baobab tagging Keegan DAVIE



Snare pick up and removal



Animal Rescue – Chris FOGGIN



Guides Training – Clint ROBERTSON



Research – Victoria Falls Wildlife Trust



Revived water holes in Hwange



Fishing along the Zambezi